

# UCLy

LYON CATHOLIC  
UNIVERSITY



## International students guide

2024-2025

Dear Student,

*In the name of all the members of Lyon Catholic University (UCLy), I would like to say how happy I am to welcome you among us. It is also my pleasure to welcome you to our city, on behalf of the Université de Lyon, the Lyon-Saint Etienne consortium of Higher Education Institutions for training and research, of which UCLy is an associated member, and to the vast Auvergne - Rhône-Alpes region, which you will soon be starting to discover and, I sincerely hope, admire.*

*You have finally reached us at UCLy after going through procedures which may well have been both long and arduous. The tradition of cultural and intellectual exchange and international friendship which brought you here is, as you will readily understand, considerably longer. The identity of UCLy is humanistic and universal, and the university attaches great importance to welcoming students and particularly international students who, even more than others, need individualised support. This guide is intended to make it as easy as possible for you to organise your stay and decide what you want to do in our university and in our city, so that your time and studies here will be rewarding both for you and, albeit less directly, for your country.*

*In addition to the help this guide will provide, you will also receive help and guidance from all the different Schools and Institutes within the university. They will probably be your first point of contact, but all the university services are also there to assist you, notably the International Relations Office which will try to make your integration easier.*

*I trust that you will make good use of this guide and I look forward to perhaps meeting you at one of our international events. In the meantime, I wish you an enjoyable and successful time.*

**Professor Grégory Woimbée,  
Rector of UCLy**



# Summary

MISSION STATEMENT FOR HOSTING INTERNATIONAL STUDENTS IN FRENCH CATHOLIC UNIVERSITIES	4
ACADEMIC CALENDAR	5
1 UNIVERSITY – 3 CAMPUSES – 1 BRANCH	6
WELCOME TO LYON – A EUROPEAN METROPOLIS	7
LYON'S HIGHLIGHTS	7
MOVING AROUND IN LYON	8
KEY MOMENTS IN LYON	9
DOWNTOWN AND VIEUX LYON MARKETS	10
LEISURE ACTIVITIES IN LYON	11
EMERGENCY PHONE NUMBERS	11
WELCOME TO ANNECY	12
ANNECY'S HIGHLIGHTS	12
MOVING AROUND IN ANNECY	12
KEY MOMENTS IN ANNECY	13
LEISURE ACTIVITIES IN ANNECY	13
LIVING IN FRANCE	14
VISA – RESIDENCE PERMIT	15
PROCEDURES IN FRANCE	16
STUDENT SERVICES ON THE CAMPUSES	17
INTERNATIONAL RELATIONS OFFICE	20
INTERNATIONAL STUDENT DESK	20
PÔLE INTERNATIONAL	21
BECOME AN ACTIVE MEMBER OF THE PÔLE INTERNATIONAL!	22
BUDDY PROGRAM	23
LYON INTERNATIONAL	23
CHECK LIST	24



Cofinancé par  
l'Union européenne

ONLYLYON 

La Région   
Auvergne-Rhône-Alpes



# MISSION STATEMENT FOR HOSTING INTERNATIONAL STUDENTS IN FRENCH CATHOLIC UNIVERSITIES

---

Lyon Catholic University pays particular attention to the needs of international students who are doing part or all of their studies at one of its schools or institutes.

In order to ensure that they are warmly welcomed, to enable them to feel at home as quickly and as effortlessly as possible and to create a climate of cultural exchange beneficial to the entire university, the representatives of UCLy hereby make the following commitments :

- **To respond quickly** to requests for information from international students, by giving explicit answers easily understandable to people of different cultural origins.
- **To offer personal attention** to students when they arrive, and to spend as much time as necessary to assist them with the material aspects of their arrival in Lyon, and the practicalities of joining the schools and institutes where they will be studying.
- **To give** them the chance to express and share their own cultural and spiritual identity and to encourage them to serve on the various representative bodies that are in charge of student affairs.
- **To help international students** with administrative formalities both inside and outside the university. One way of doing this is to identify staff members and French students who can give personalised assistance.

In accordance with the human and Christian values that inspire them, the members of UCLy consider that international students, through their linguistic, cultural and spiritual differences, serve to promote universality.





# ACADEMIC CALENDAR

---

**Semestre 1:** Septembrer – January

**Semestre 2:** February – June

## 1) School and public holidays

- **Christmas:** 2 weeks (end of December – beginning of January)
- **Winter Holidays :** 1 week in February or March
- **Spring Holydays:** 1 or 2 weeks in April
- **Public Holidays :**
  - \_ November 1<sup>st</sup> (All Saints' Day)
  - \_ November 11<sup>th</sup> (Armistice Day)
  - \_ December 25<sup>th</sup> (Christmas)
  - \_ January 1<sup>st</sup> (New Year's Day)
  - \_ April 1<sup>st</sup> (Easter Monday)
  - \_ May 1<sup>st</sup> (Labor Day)
  - \_ May 8<sup>th</sup> (Victory in Europe Day)
  - \_ May 9<sup>th</sup> (Ascension Day)
  - \_ May 20<sup>th</sup> (Whit/Pentecost Monday)
  - \_ July 14<sup>th</sup> (National Day)
  - \_ August 15<sup>th</sup> (Assumption Day)

## ▲ IMPORTANT

### 2) UCLy is closed

- From Friday evening, December 20<sup>th</sup>, 2023 to Monday morning, January 5<sup>th</sup>, 2024
- 3 weeks in July - August

**However, ILCF remains open during July and August.**



# 1 UNIVERSITY — 3 CAMPUSES — 1 BRANCH

UCLY is located on 2 campuses very close to each other in the heart of Lyon and 1 campus in Annecy :



## **Campus Saint-Paul** 10, Place des archives – Lyon 2<sup>e</sup>

- The Department of Economics and Management - now accredited
- The Department of Legal, Political, and Social Sciences
- The Department of Sciences and Health
- Rectorate
- Administration
- Central services (International Relations, Communication, University Secretariat)
- Student services



## **Campus Carnot** 23, Place Carnot – Lyon 2<sup>e</sup>

- The Department of Literature and Languages
- The Department of Theology and Religious Sciences
- The Department of Philosophy and Human Sciences et Sociales



## **Campus Alpes Europe** 25, Rue de la Cité - Annecy

- The Faculty of Law
- ESDES (Business School)



## **Puy-en-Velay branch** 2, Rue Bec de Lièvre

- Bachelor Tourism Development



## WELCOME TO LYON A EUROPEAN METROPOLIS

---

Lyon, administrative center of the Rhône department and European metropolis of over 1.5 million inhabitants, is situated at the confluence of the Rhône and Saône rivers. Lyon is a cultural, artistic and gastronomic centre, as well as a UNESCO World Heritage Site. As such, it has an abundance of architectural and cultural treasures.

It hosts events of international dimension such as the Dance and Art Biennale, the Nuits Sonores, the Nuits de Fourvière, the Fête des Lumières (Lyon Festival of Lights), etc.

Lyon offers a variety of cultural draws such as its Opera, House of Dance, theaters, museums, libraries...

It is one of France's most prominent centers for European business. Many foreign and domestic companies of international scale as well as international organizations (Interpol, Euronews, WHO, IARC ...) are located in Lyon and the Auvergne-Rhône-Alpes region.

Lyon is the second largest student city in France with four universities and several colleges. The scientific community is very dynamic with particular centers of excellence in the areas of medical research, biotechnology, transportation, clean technology and digital entertainment.

## LYON'S HIGHLIGHTS

---

- Lyon is considered as the world capital of gastronomy.
- A bouchon is a unique type of restaurant found in Lyon that serves specialties of the region: andouillette (sausage of coarsely cut tripe), tablier de sapeur (beef tripe marinated in white wine, covered in breadcrumbs and fried), cervelle de Canut (cheese seasoned with chopped herbs and shallots), grattons (pork, goose, chicken or duck fat fried... in their fat!), quenelles (mixture of creamed fish or meat, with a light egg binding, formed into an egg-like shape).
- Lyon was historically known for the production and weaving of silk. The silk-weavers were called Canuts.
- Traboules are hidden passages connecting one street to another. Originally used by the Canuts during the 19th century to transport silk but also by the French Resistance during the Second World War. silk weavers).



# MOVING AROUND IN LYON

---

## By public transport

TCL

Greater Lyon's public transport network, ran by TCL, consists of metro and tram lines, funicular railways and bus routes.

- **Campus Saint-Paul:** Métro ligne A, arrêt Perrache - Tram: T1 et T2 arrêt Place des Archives
- **Campus Carnot:** Métro ligne A, arrêt Perrache - Tram: T1 et T2 arrêt Perrache

A single ticket, which lasts one hour, costs 2€ or 2,30€ if you buy your ticket on the bus. For people aged 18 to 25 and students aged 26 or 27, the monthly pass is 25 € per month.

+ further informations [www.tcl.fr](http://www.tcl.fr)



## By bike

Vélo'v



Vélo'v is a bike rental service with over 5000 bikes and electric bikes available 428 stations on a 24/7 basis and Electric bikes. A single ride ticket costs 1,80 € and can be bought online or directly at a Vélo'v station kiosk by bankcard. A day Pass ticket costs 4 € and is valid for 24 hours.

Annual membership for 14-25 years old is 16,50 €. Depending on the card the membership is attached to, the first 30 or 45 minutes of each ride are free. Beyond that, you will be charged per minute.

+ further informations [www.velov.grandlyon.com](http://www.velov.grandlyon.com)





## KEY MOMENTS IN LYON

---

- **Dance and Art biennale**

September-October

The biennale alternates between dance and art every year.

- **Lumiere festival of cinema**

October

The worldwide event of classic cinema.

- **Festival of Lights**

Around December 8<sup>th</sup>

For 4 nights, a variety of different artists light up buildings, streets, squares and parks all over the city.

- **Quais du Polar**

March

A unique panorama of the world's crime fiction with hundreds of authors for 3 days in Lyon.

- **Nuits Sonores**

May

During the ascension weekend, a festival that focuses on electronic music.

- **Assises Internationales du Roman**

May

A festival for the readers!

- **Lyon BD Festival**

June

To celebrate the art of comic, the city welcomes more than 200 writers.

- **Consular parties**

June

Get to know more about different cultures, traditions and foods with representatives from more than 50 countries.

- **Nuits de Fourvière**

June – July

A month and a half of various artistic representations: music, theater, dance, circus.

- **Tout l'monde dehors !**

Summer

Free events during the summer.

## DOWNTOWN AND VIEUX-LYON MARKETS

---

- **Food and flowers markets :**

*Saint Antoine Célestins*

Throughout the year: open from Tuesday to Sunday from 6:00 am to 1:00 pm (1:30 pm Friday to Sunday)

Quai Saint Antoine and quai des Célestins - Lyon 2

*Quai Augagneur*

Throughout the year: open from Tuesday to Sunday from 6:00 am to 12:30 pm (1:30 pm Friday to Sunday) and on Thursday afternoon from 3:00 pm to 7:00 pm

Quai Augagneur – Lyon 3

*Croix-Rousse*

Throughout the year: open from Tuesday to Thursday from 6:00 am to 1:00 pm (1:30 on Friday, Saturday and Sunday)

Boulevard de la Croix-Rousse – Lyon 4

- **Farmer's market (in the evening)**

Throughout the year: every Wednesday from 3:00 pm to 8:00 pm

Place Carnot – Lyon 2

- **Organic market**

*Saint-Jean*

Throughout the year: every Thursday from 6:00 am to 12:30 pm

Place Edouard Commette, côté Manécanterie, Cathédrale St Jean - Lyon 5

*Les halles de la Martinière*

The grocery store is open from Monday to Saturday from 10:00 am to 8:00 pm

23 rue de la Martinière – Lyon 1



# LEISURE ACTIVITIES IN LYON

---

## 1) Discover Lyon and its region

Information from the Lyon Tourist Office, Place Bellecour.  
For all the city's best addresses:

[www.lyon-france.com/Je-decouvre-Lyon/collector-le-city-guide](http://www.lyon-france.com/Je-decouvre-Lyon/collector-le-city-guide) *ui*

## 2) Pass Culture

The city of Lyon offers a cultural package giving access to 4 cultural events (to choose among 102 institutions in the agglomeration) for 18 €, as well as various discounts. Priority is given to newcomers on presentation of the student card (or registration certificate).

Pass Culture will be sold from September, and is limited to 2 per student.

+ further informations [passculture@grandlyon.com](mailto:passculture@grandlyon.com)

## 3) Lyon Campus: the student web of Lyon metropolis

Universities usually offer their own cultural activities such as theatre, dance, concerts, exhibitions, guest lectures, cine-clubs... But also spread the word about cultural events in Lyon and its surroundings.

+ further informations [www.lyoncampus.com/](http://www.lyoncampus.com/)

## 4) Le Petit Paumé

The guide to good deals (leisure, gastronomy, shopping, etc.), made by students for students.

+ further informations [passculture@grandlyon.com](mailto:passculture@grandlyon.com)

## 5) UCLY's Cultural Mission

By often showing works of art and cultural events on Lyon campuses, hosting thinkers and creators to exchanges and UCLY offers to upgrade their students' learning experience.

+ further informations [uclly.fr/mission-culture/](http://uclly.fr/mission-culture/)

# EMERGENCY PHONE NUMBERS

---

## ● UNIVERSAL EUROPEAN EMERGENCY SERVICES NUMBER: 112

- SAMU (ambulances): 15 – 04 72 68 93 00
- Fire brigade: 18
- Police: 17

## Other useful numbers

- Anti-poison and Anti-drug Centre: 04 72 11 69 11
- Drugs Information service: 0 800 23 13 13 – 01 70 23 13 13
- Alcohol Information service: 0 811 91 30 30
- Psychiatric emergencies: 04 72 11 69 53
- Pharmacies open 24/7 :  
Grande Pharmacie lyonnaise (de 20h à 8h00): 04 72 56 44 00  
22 rue de la République – 69002 Lyon
- Hôpital Saint Joseph Saint Luc  
20 Quai Claude Bernard – 69007 Lyon  
04 78 61 81 81
- SOS Médecins 24h/24 (doctors): 04 78 83 51 51
- SOS Amitié (emotional support): 04 78 29 88 88 – 04 78 85 33 33
- Neighbourhood police station: 04 78 35 33 28
- CAP Écoute: 0800 33 34 35 – 04 72 33 34 35
- Maison Médicale de Garde: 04 72 33 00 33
- Nightline: 04 85 30 00 10  
Available in french and english | [nightline.fr](http://nightline.fr) (chat)



# WELCOME TO ANNECY

.....

Annecey, nicknamed «Venice of the Alps» for its canals that run through the old town and its lake with blue-green waters, is located 40 km from Geneva and 50 km from Chambéry. Perched at an altitude of 446 meters, Lake Annecy is the second largest natural lake in France and the first lake in Europe for the purity of its waters. As a city with a long story and an important Gallo-Roman influence, Annecy has also preserved a rich architectural heritage. Between lake and mountains, the capital of the Haute-Savoie is in the seventh place of the 2023 ranking of cities with more than 2000 inhabitants where it is good to live.

## ANNECY'S HIGHLIGHTS

.....

- In February, A few days after the one in Venice, Annecy hosts its Venetian carnival with hundreds of masked and disguised people, who wander and parade through the streets in a quiet atmosphere.
- Annecy has become the world capital of animated films with its famous festival where several thousand professionals gather to select the best animated film of the year during which films are broadcast for free in theatres and outdoors.
- Annecy is known for its Savoyard specialities: fondue (comté, emmental and beaufort cheeses cooked with white wine and garlic), raclette (cheese melted over a fire and then scraped onto boiled potatoes), tartiflette (baked potatoes, reblochon cheese, lardons and onions) and its variant, the croziflette (potatoes are replaced with little pasta called crozets).



## MOVING AROUND IN ANNECY

.....

### By public transports **Sibra**

**Alpes Europe Campus:** Line bus 15, Balmettes stop  
A single ticket, which lasts 1 hour, costs 1,50 €. Several transport pass are available for people under 26: monthly at 23.60 €, quarterly at 59 € and annual at 156 €. Some of them can be combined, for example train and bus or inter-city pass.

+ further informations [www.sibra.fr](http://www.sibra.fr)



### By bike **Vélonecy**

More than 600 bikes are available in the city and its surroundings with several rental options.

Students benefit from the following reduced rates:

- for a classic or folding bike: 8 €/week, 13 €/month, 60 €/year
- for an electric bike: 250 €/year no time limit

+ further informations [www.velonecy.com](http://www.velonecy.com)





## KEY MOMENTS IN ANNECY

---

- **Descent from the mountain pastures**

October

Big traditional festival with craft shows, demonstrations of old trades, folk dancing groups, and tasting of local produce.

- **Italian Film Festival**

September-October

A film festival that rewards and presents the best Italian films released during the year.

- **High Five festival**

September

Europe's biggest mountain skiing event, it lasts a week!

- **Hors Piste Festival**

February-March

A festival that unearths the best of the national and international avant-garde music, with concerts and shows held in various atypical and historic Annecy venues.

- **Lake Festival**

August

On the first Saturday in August, the Bay of Albigny becomes the enchanting setting for Europe's biggest fireworks show, incorporating all the latest fireworks and animation techniques.

## LEISURE ACTIVITIES IN ANNECY

---

### 1) Discover Annecy and its region

Information at the Tourist Office of Lake Annecy,  
1 Rue Jean Jaurès - 74000 Annecy

For all the great places in the city and all around:

[www.lac-annecy.com](http://www.lac-annecy.com)

[www.lac-annecy.com/content/uploads/2020/11/Lac-Annecy-Guide-pratique.pdf](http://www.lac-annecy.com/content/uploads/2020/11/Lac-Annecy-Guide-pratique.pdf)

### 2) Cultural events

Universities usually offer their own cultural activities such as theatre, dance, concerts, exhibitions, guest lectures, cine-clubs... But also spread the word about cultural events in Lyon and its surroundings.

- **Carte Pass' Région**

- **Chèque Loisirs Jeunes**

+ further informations

[ucl.fr/l-ucl/nos-campus/campus-annecy/loisirs/](http://ucl.fr/l-ucl/nos-campus/campus-annecy/loisirs/)

# LIVING IN FRANCE

---

## 1) Where to find a job?

### Small ads on you Intranet account, in «Student Jobs»

**At the CROUS** [Regional Centre for Student Support Services], you can find short-term jobs within the academic year.

59, rue de la Madeleine – 69007 Lyon

[www.crous-lyon.fr](http://www.crous-lyon.fr)

5 rue d'Arsonval - 38000 Grenoble

[www.crous-grenoble.fr](http://www.crous-grenoble.fr)

### At the Regional Youth Information Center

66, cours Charlemagne – 69002 Lyon

### At the Local Structure Youth Information

Centre Culturel Bonlieu

1 rue Jean Jaurès - 74000 Annecy

[www.info-jeunes.fr/](http://www.info-jeunes.fr/)

Find the the list of sites dedicated to searching for employment on the UCLy webpage:

<https://www.uclly.fr/travailler-en-france/>

Looking for an internship? Consult the school, institute or faculty where you are registered.

When it comes to **work**, most international students with a «student» VLS-TS are allowed to work up to 60% of a full time job [equivalent to 20h/week] without any additional administrative authorization [Exception: For Algerian students, a temporary work permit is mandatory].

## 2) Budget

To live in Lyon or Annecy, make sure you have a budget of 1000 €/month on average. These prices are subject to change !

### Accommodation

- UCLy University Residence:
  - Houses St Laurent: 467 € [all charges included] for long stays from 7 months and 485 € [all charges included] for short stays from 3 to 7 months
  - And St Bernard: 543 € [all charges included] for long stays from 7 months and 587 € [all charges included] for short stays from 3 to 7 months
- Spare rooms: 420 € [all charges included]
- A studio: from 550 € [charges not included]
- Room in a shared flat: 500 € [charges not included]
- Private student residence: from 500-600 € [electricity expenses not included]

### Other expenses

- Monthly electricity, gas and telephone bill: 60€ on average

### City transport

- Student fare up to 27 years old for 23,60 € [in Annecy] and 25 € [in Lyon]
- Fare for over 27 years old for 44,50 € [in Annecy] and 72,60 € [in Lyon]

### Food

- About 200 € a month
- Lunch at the university cafeteria: ~ 4€
- Diner at a nice restaurant: ~ 20€

# VISA – RESIDENCE PERMIT

---

**You are a citizen of the European Union, the European Economic Area, or Switzerland :** No formalities are necessary. A valid identity card or passport is sufficient, and bring your birth certificate.

**You are not a citizen of the European Union, the European Economic Area, or Switzerland:** A passport is required to enter the French territory. Before departure, contact the French Embassy in your country and make sure that your passport expires at least 6 months after the final day of your stay.

## 1) Get a student visa

Depending on your country of residence and/or nationality, a visa may be required, depending on the length of your planned study stay.

If you apply from a country where the Campus France procedure is mandatory (Etudes en France / Study in France), you have to submit your application through the online procedure.

[www.campusfrance.org/fr/candidature-procedure-etudes-en-france](http://www.campusfrance.org/fr/candidature-procedure-etudes-en-france)

At the end of the «études en France» procedure, non-European applicants, including those of British nationality, will need to apply for a visa. In most cases, as a student, you can benefit from a long stay visa valid as a residence permit, which exempts you from additional formalities for the first year.

[www.france-visas.gouv.fr/web/france-visas/](http://www.france-visas.gouv.fr/web/france-visas/)

## 2) Validating your «Student» visa

Within 3 months of entering France, you must validate your long stay visa valid as a residence permit. To do so, go to :

[administration-etrangers-en-france.interieur.gouv.fr/particuliers/#/](http://administration-etrangers-en-france.interieur.gouv.fr/particuliers/#/)  
>Validate your VLS-TS long stay visa

## 3) Renewal of residence permit

If you wish to pursue your studies at UCLy, you must apply for a renewal within 2 months before your student VLS-TS expires.

Do not hesitate to contact the International Student Desk (ISD), if you require help with your application.

[administration-etrangers-en-france.interieur.gouv.fr/particuliers/#/](http://administration-etrangers-en-france.interieur.gouv.fr/particuliers/#/)  
> I would like to apply or renew my residence permit

+ further informations : [www.ucl.fr/visas-et-titres-de-sejour/](http://www.ucl.fr/visas-et-titres-de-sejour/)  
<https://espace-ulyx.universite-lyon.fr>

*Préfecture du Rhône | 97, rue Molière – 69003 Lyon  
Tél.: +33(0)4 72 61 60 60 ou +33(0)4 72 61 67 06*

[www.rhone.gouv.fr](http://www.rhone.gouv.fr)

*Préfecture de la Haute-Savoie | Rue 30E Régiment d'Infanterie - 74000 Annecy  
Tél. +33(0)4 50 33 60 00*

[www.haute-savoie.gouv.fr](http://www.haute-savoie.gouv.fr)

# PROCEDURES IN FRANCE

---

## 1) Student and Campus life contribution

Each student must pay a mandatory contribution of 103 € before registering at UCLy.

To proceed, visit: [www.messervices.etudiant.gouv.fr](http://www.messervices.etudiant.gouv.fr) to create your account and proceed to the payment.

Note: This fee does not apply to exchange students joining UCLy.

## 2) Banking

It is advised to open a bank account in France upon arrival. You must provide the following documents in order to open a bank account :

- a proof of address
- a valid identity card or passport
- a certificate of enrollment or a student card

+ further informations: [uclly.fr/en/bank-account](http://uclly.fr/en/bank-account)

## 3) Social Security – healthcare

**If you are a citizen of the EU / EEA or Switzerland**, you should apply to the social welfare organization of your country of origin for a European Health Insurance Card (EHIC).

**If you are not a citizen of the EU / EEA or Switzerland**, the affiliation to the French social security is mandatory. You will have to do it online and submit the required documents: [etudiant-etranger.ameli.fr/espace/#/](http://etudiant-etranger.ameli.fr/espace/#/) This cannot be done before your arrival in France. It is therefore strongly recommended that you take out insurance to cover your health costs in France during the first few months before your departure. Registration to the social security is not immediately effective.

+ further informations: <https://www.uclly.fr/international/international-student-desk/etre-en-regle/frais-de-sante/>

## 4) Housing aid - the CAF ( Caisse d'allocations familiales)

Like all students, you can benefit from financial assistance from the Caisse d'Allocations Familiales (CAF) to help you pay your rent. The process is free and entirely online: [caf.fr](http://caf.fr)

+ further information : <https://www.uclly.fr/international/international-student-desk/etre-en-regle/allocation-logement-caf/>





# STUDENT SERVICES ON THE CAMPUSES

---

All services housed on the Saint-Paul and Carnot campuses are accessible to Campus Alpes Europe students. Don't hesitate to contact them by e-mail or telephone!

## 1) Housing Office

**S** Saint-Paul Campus - C001 office  
Isabelle MORALES and Valérie MAZOYER  
sl@univ-catholyon.fr  
Tel.: +33(0)4 26 84 52 02 or +33(0)4 72 32 51 73

There are different types of housing:

- 2 UCLy student residences :  
House Saint Bernard and House Saint Laurent  
[www.maisondesetudiantslyon.fr](http://www.maisondesetudiantslyon.fr)
- social housing
- Private student residences
- Boarding house with families

UCLy provides students with a housing platform:

+ further information

[www.uclly.fr/en/student-life/accomodation-uclly/](http://www.uclly.fr/en/student-life/accomodation-uclly/)

You can be eligible for housing benefits (rather applicable to long stay). Housing assistance is granted from the month after you move in, subject to the submission of a complete application file.

## 2) Health

- **Preventive medicine**  
Consultations and prevention

**S** Saint-Paul Campus – Health area C029  
Carnot Campus - Health area L051  
medecine.preventive@univ-catholyon.fr  
Tel.: +33(0)4 72 32 51 72

- **Counselling service (Point Écoute)**

Emotional and psychological support provided by a professional in a confidential atmosphere.

**S** Saint-Paul Campus – Health area C030  
point.ecoute@univ-catholyon.fr  
Tel.: +33(0)4 72 32 50 27

- **Mission Handicap**

Mission Handicap has been established to ensure a comfortable learning environment for students with disabilities. Specific procedures regarding courses and/or exams can be implemented, depending on your situation or requests.

**S** Saint-Paul Campus – office C026  
mission.handicap@univ-catholyon.fr  
Tel.: +33(0)4 72 32 51 72

- **Resting area and workshops**

Did you know that sleeping well helps you succeed? That's why a siesta room has been set up to help you discover the benefits of a micro nap on the body. Sophrology, meditation and aromatherapy workshops are also offered throughout the year.

**S** Carnot Campus – L056  
Saint-Paul Campus – Basement – AS01 room

## 3) Service social.

A social services department and a social worker are at your disposal to accompany you in resolving your problems. : <https://www.uclly.fr/vie-etudiante/services-aux-etudiants/service-social/>



#### 4) The Mission culture

Since 2017, UCLy's Mission Culture has been inviting Art to its campuses and offering students a variety of cultural events: exhibitions, performances, concerts, workshops...

It is also committed to encouraging artistic and cultural practice through the **Theatre Troupe**, the **UCLy Choirs** and the **Orchestra (M2CO)**.

- **Le U-Art festival**

In April, student artists have the opportunity to exhibit their creations on UCLy's Lyon campuses. Musicians, painters, photographers, authors, the festival is open to all. Students are then invited to vote for their favorite work!



#### 5) Sports

Choose among 25 activities from mid-September to mid-May [aerobics, athletics, rowing, climbing, football, dance, swimming, etc.]

**Saint-Paul Campus:** Gymnasium, 6<sup>th</sup> Floor

 *Saint-Paul Campus - Gymnasium, 6th Floor (Building A)*  
*bds@univ-catholyon.fr*  
*Tel +33(0)4 72 32 50 69*

*Open on Mondays, Tuesdays and Fridays from 12:30 to 1:30 p.m for information*

<https://www.ucl.fr/vie-etudiante/vie-associative/le-sport-a-lucly/>

#### 6) Chaplaincy


Chaplaincy welcomes students, professors and administrative staff. Solidarity and creativity initiatives, through events organized all year long.

 *Saint-Paul Campus- C258 room*  
*aumonerie@univ-catholyon.fr*  
*Tel +33(0)4 72 32 50 16*

<https://www.ucl.fr/vie-etudiante/vie-associative/aumonerie-universitaire/>

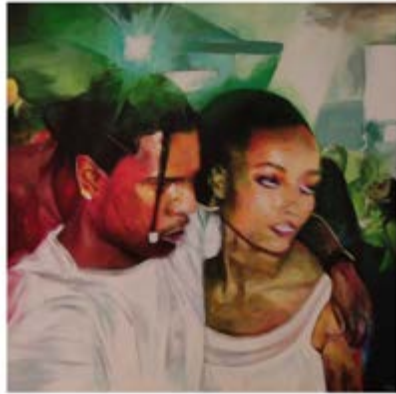
#### 7) The « Foyer » / Student spaces

Student break rooms, ideal for meetings and exchanges. . Micro-waves, foods and drinks dispensers are available.

 *Saint-Paul Campus: Building A - Level -1 and Building B - Ground Floor*

*Carnot Campus: Building L - Level -1*

*Alpes Europe Campus: Student space*



«Sundress» by Joséphine Caron that won 1<sup>st</sup> prize of the U-Art festival 2024

#### 8) Choeurs de l'UCLy

Conducted by a young and dynamic professional choirmaster, the Choirs of UCLy allow to develop vocal expression, interpretation, listening, breathing, voice placement, and quality musical performances.

- **Choir school:**

4 workshops are offered during the year: Gospel, musicals, French and international songs.

No experience is required; the pedagogy of the choirmaster adapts to all levels, and the repertoire opens to all styles. This workshop welcomes students, members of the concert choir, but also people from all backgrounds wanting to discover a musical style.

- **Concert Choir:**

The choir of the University offers a repertoire covering several centuries of sacred musical heritage (Monteverdi, Bach, Haydn, Mendelssohn and contemporary composers) for concerts with soloists and professional musicians. It is open to UCLy students and staff, as well as anyone wishing to join the choir. At the beginning and after the rehearsal, a quick interview with the choirmaster will confirm your place in the choir.

**Rehearsals on Mondays from 6:45 pm to 8:45 pm at the Ozanam Room**


 *Carnot Campus*  
*choeurs@univ-catholyon.fr*

*Page Facebook: @AssoChoeursUCLy*

## 9) Henri de Lubac University Library

The library hosts almost 400,000 documents, including 760 journals, 6,000 online magazines and 15,000 ebooks of which 300 are perennial.

Modern works directly accessible to the public are distributed according to the teaching locations of UCLy students.

 Saint-Paul Campus - Building A - 2<sup>nd</sup> Floor  
Open from Monday to Friday, from 8:30 a.m to 8:00 p.m

Carnot Campus - Building K - Ground Floor  
Open from Monday to Friday, from 8:30 a.m to 8:00 p.m

Alpes Europe Campus - 25 rue de la cité 74000 Annecy

+ d'informations : [www.ucl.fr/en/student-life/campus-life/library/](http://www.ucl.fr/en/student-life/campus-life/library/)

There is also a large number of municipal libraries in Lyon.

+ d'informations : [www.bm-lyon.fr](http://www.bm-lyon.fr)

## 10) La Fédé

Student board of associations in charge of coordinating all of UCLy's student associations.

+ further information

[ucl.fr/la-fede-kto/](http://ucl.fr/la-fede-kto/)

[www.facebook.com/fedekto](https://www.facebook.com/fedekto)

Instagram : @fede.ucl

## 11) Humanities Training Department (DFH)

**The personal and cultural training – a strong suit in UCLy!**

The Humanities Training Department offers cross-disciplinary courses (intercultural relations, arts and ethics) as well as workshops (artistic expression, self-awareness, entrepreneurship) to develop our students' understanding of the world through different learning perspective.

These courses include:

- Emotional intelligence and positive psychology
- Media Literacy
- Theater: writing and acting
- Thinking and living interculturality
- Workshop: Acting in English
- Environmental challenges: biodiversity



**DÉPARTEMENT DE  
FORMATION HUMAINE**

Exhaustive list of DFH courses:

[ucl.fr/catalogue-cours-formation-humaine/](http://ucl.fr/catalogue-cours-formation-humaine/)

The DFH offers excellent opportunities for encounters and exchange between French and international students. Besides, some courses are taught in English.

 Saint-Paul Campus– Building C, Entresol  
[fh@univ-catholyon.fr](mailto:fh@univ-catholyon.fr)  
Tel.: +33(0)4 72 32 51 56

## 12) French Language and Culture Institute (ILCF)

Whether you want to follow French courses or take an exam to certify your skills, ILCF offers you this opportunity. You will have the choice between different teaching schedules as well as exam sessions throughout the year.

 Carnot Campus  
[ilcf@univ-catholyon.fr](mailto:ilcf@univ-catholyon.fr)  
Tel +33 (0)4 72 32 50 53

[www.ilcf.net](http://www.ilcf.net)



# INTERNATIONAL RELATIONS OFFICE

---

UCLy, holder of the «Bienvenue en France» label since 2019, and was once again awarded this certification by Campus France in May 2023, pays special attention to the quality of its welcome and support international students and is deeply committed to their continuous improvement. In this context, the International Relations team is pleased to welcome you throughout the year and to facilitate your integration so that you can live your French experience with serenity.



**S** Saint-Paul Campus – building L, section A, 2<sup>nd</sup> floor, office A275-A278  
Tel.: +33 (0)4 72 32 50 79  
[ri@univ-catholyon.fr](mailto:ri@univ-catholyon.fr)

# INTERNATIONAL STUDENT DESK

---



You are lost in the maze of administrative procedures?  
You are looking for a job or you want to get involved in associations?

The International Student Desk (ISD) team is here to help, support and advise you for an easy integration. Do not hesitate to contact us or come to our office!

**Opening Hours:**

Tuesday and Thursday: 9 am to 5 pm + Wednesday: 9 am - 12h30 pm

For an appointment:

[calendly.com/isd-ucly/rdv](https://calendly.com/isd-ucly/rdv)

Making an appointment is necessary for the following administrative procedures:

- Process for residence permit renewal
- Social security registration
- Housing allowance application

**Access & Contact:**

International Relations Office  
Saint Paul Campus – building L, section A, 2<sup>nd</sup> floor, office A275  
[isd@univ-catholyon.fr](mailto:isd@univ-catholyon.fr)  
+33 (0)4 26 84 50 13

## PÔLE INTERNATIONAL

.....

Within the International Relations Office, the Pôle International offers a wide range of events and free activities for UCLY's international students.

**Once a year / semester:**

- **Welcome Buffet:** presentation of UCLY followed by a welcome buffet.
- **World dinner:** share and discover international food.
- **King cake party:** taste the traditional Galette des Rois.
- **Visit of the Museum of Fine Arts:** immerse yourself into the Museum's magnificent art collections.
- **Wine and cheese tasting:** don't miss these emblems of French gastronomy !
- **Meet and eat international:** be the ambassador of your country culinary and cultural traditions.
- **Visit of the Lyon Presqu'île:** discover the emblematic places in the heart of Lyon.
- **Visit of Saint-Paul campus:** discover the history of this former prison.

**Throughout the year:**

Cultural and gastronomic excursions, bowling nights, exhibitions, raclette night...

- **Café langues:** improve your language skills and share your culture by meeting with French and international students

The invitations to events are sent to your UCLY e-mail addresses.

For better organization, registration is necessary to participate in activities.

**To not miss any event from the Pôle International:**

[www.facebook.com/internationalstudentsUCLY](https://www.facebook.com/internationalstudentsUCLY)

[@internationalstudentsofucly](https://www.instagram.com/internationalstudentsofucly) sur Instagram

Contact: [poleinternational@univ-catholyon.fr](mailto:poleinternational@univ-catholyon.fr)

# BECOME AN ACTIVE MEMBER OF THE PÔLE INTERNATIONAL!

---

The Pôle International is delighted to collaborate with students to participate in the organization of events and activities. Two volunteer students share their experience:

*« Early this year I decided to be part of the Pôle International, and I do not regret my decision! My main goal was to meet people with diverse backgrounds and have meaningful exchanges around our cultural differences, thus learning more about the world we live in. By attending Pôle International events, I made numerous international friends, and shared amazing moments with them as well as with other French members. Overall, contributing to the Pôle International is a greatly enriching experience for everyone involved! »*

**Maÿlis VANDAME, student at ESTRİ**

*«I decided to be part of the Pôle International in order to meet foreign students and also because I like to organise events. During this period, I was able to develop my language skills in both French and English, work in a team and welcome students from all over the world in order to connect them together. I believe that the mission of a volunteer is to give time to others and contribute to a personal and cultural development through exchanges.»*

**Pietra FIRAKOWSKI, Brawilian student at the faculty of Law**

*«I'm very sociable by nature, I like being in a multicultural environment and ISD organizes a lot of events for international students, which allows you to meet people from different cultures and share your own as well. The ISD team is warm and supportive. I was lucky enough to meet Mégane, who always has a friendly smile and makes herself available whenever I need help. She very often comes up with a solution to my problems, or tries to find one. She made my stay in Lyon so much easier!»*

**Rozhin AFRASIABI, Iranian student at ILCF**

If you want to become an active member of the Pôle International!

contact us at: [poleinternational@univ-catholyon.fr](mailto:poleinternational@univ-catholyon.fr)



## BUDDY PROGRAM

---

Be part of a tandem with a French student at UCLy who will help you easily integrate your new life in Lyon! The Pôle International will put you in touch with your French buddy, after you've sent the following information at:

[uclly.fr/international/accompagnement-etudiants-internationaux/buddy-program/](http://uclly.fr/international/accompagnement-etudiants-internationaux/buddy-program/)

«Participating in the Buddy Program not only allows a person just arriving in France to discover the country, the culture, improve their French and meet at least one «local», it also allows French people to discover a new culture, meet new people and, why not, improve their language skills. Joining the Buddy Program is also a great way to make friends. Personally, I've kept in touch with my Buddy!»

**Solène MOURIER, student at the faculty of Law**

«As I myself was questioning the idea of mobility abroad, I wondered how to approach this decision. Meeting my buddy was for me a successful approach in two senses. Firstly, because of the great friendly relationship that developed, but also because of the exchange: while I was showing him the best of Lyon, my buddy taught me all about mobility so that I could be as prepared as possible. I recommend it 100%.»

**Matis Chateau, student at the faculty of Law**

## LYON INTERNATIONAL

---



### Our partner Lyon International

The association Lyon International consists of 400 families from Lyon that welcome students in their homes for a cheerful dinner. The perfect occasion for cultural exchanges!

Lyon International also offers festive events throughout the year: international buffets, discovery of the Beaujolais region, Rally of painted walls...

+ further information

[www.lyon-international.org](http://www.lyon-international.org)

# CHECK LIST

European student		Non-european student	
Steps to go through			
Country with Etudes en France procedure - Eef (Campus France)		Country without Etudes en France procedure	
<b>Before your arrival in France</b>	Ask for your European Health Insurance Card (Carte Européenne d'Assurance Maladie - CEAM)	Contact your Espace Campus France to do the Eef procedure Once you have obtained your "Accord Préalable d'inscription" Campus France: Ask for the long stay visa valid as a resident permit (VLS-TS) "Etudiant" ("Student")	Contact the embassy/consulate of France to learn about the procedure of asking for the long stay visa valid as a resident permit (VLS-TS) "Etudiant" ("Student")
	<b>Documents to prepare</b>	<b>Documents to prepare</b>	<b>Documents to prepare</b>
ID card and/or passport Copy of your birth certificate with filiation European Health Insurance Card (CEAM) Important medical information Acceptance letter to UCLY Driver's licence Electrical socket adapter	Copy of your birth certificate with filiation + French translation by a sworn translator Private insurance for the first 2-3 months in France Important medical information Acceptance letter to UCLY Driver's licence Electrical socket adapter	Copy of your birth certificate with filiation + French translation by a sworn translator Private insurance for the first 2-3 months in France Important medical information Acceptance letter to UCLY Driver's licence Electrical socket adapter	Copy of your birth certificate with filiation + French translation by a sworn translator Private insurance for the first 2-3 months in France Important medical information Acceptance letter to UCLY Driver's licence Electrical socket adapter
<b>Steps to go through*</b>			
*The International Student Desk (ISD) helps you with these procedures			
<b>When you arrive in France</b>	Pay the CVEC (unless you are an exchange student) Ask for the housing aid CAF (optional)	Pay the CVEC (unless you are an exchange student) Get your long stay visa valid as a resident permit (VLS-TS) "Etudiant" ("Student") approved (mandatory) Open a bank account (optional) Register for the CPAM health insurance (mandatory) / complementary insurance (optional) Ask for the housing aid CAF (optional)	Pay the CVEC (unless you are an exchange student) Get your long stay visa valid as a resident permit (VLS-TS) "Etudiant" ("Student") approved (mandatory) Open a bank account (optional) Register for the CPAM health insurance (mandatory) / complementary insurance (optional) Ask for the housing aid CAF (optional)
<b>Before you leave France</b>	Contact the CAF to inform them of your departure from France	<b>Steps to go through*</b> *The International Student Desk (ISD) helps you with these procedures Contact your bank to close your account Contact the CAF to inform them of your departure from France	